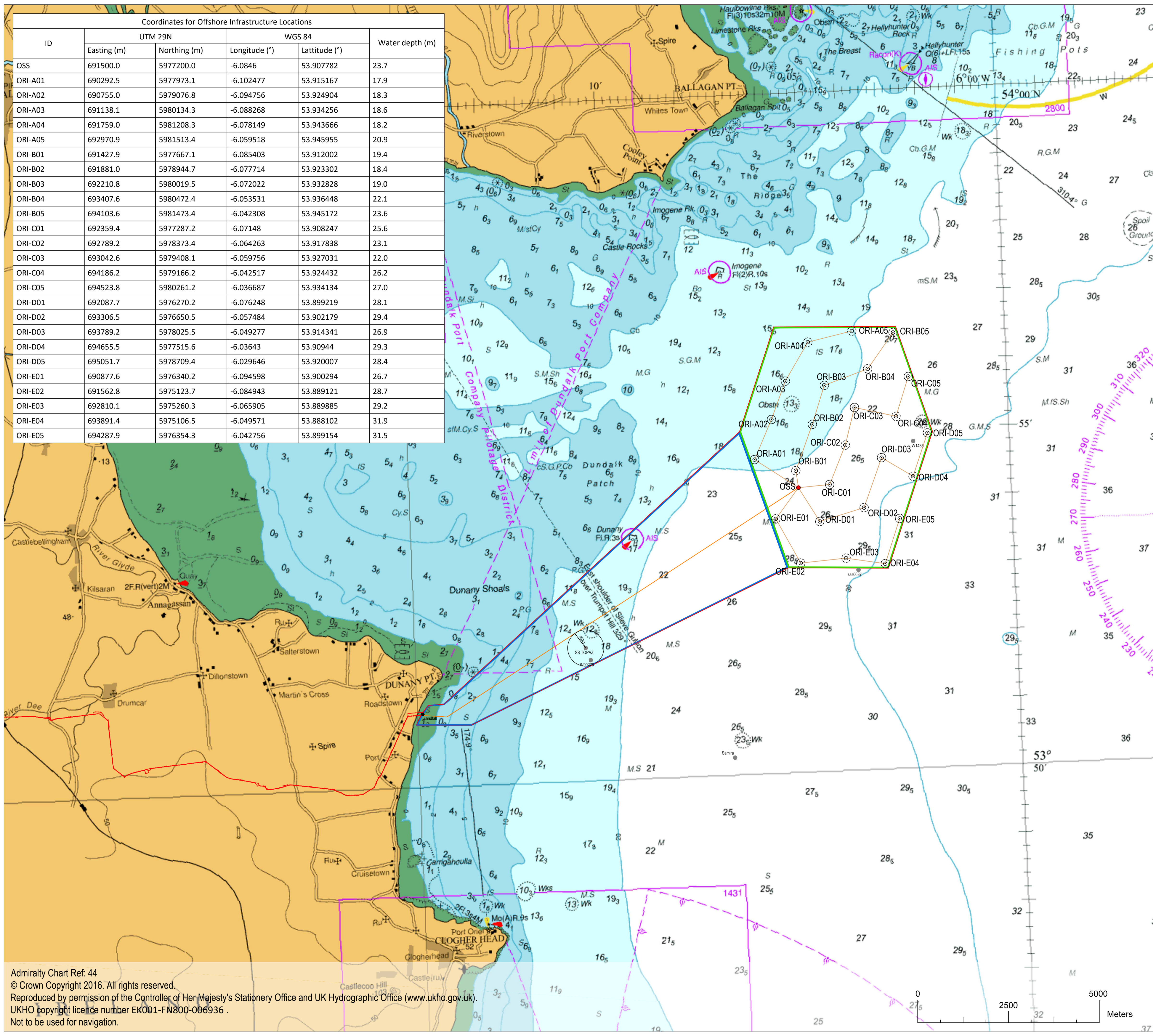


Coordinates for Offshore Infrastructure Locations					
ID	UTM 29N		WGS 84		Water depth (m)
	Easting (m)	Northing (m)	Longitude (°)	Latitude (°)	
OSS	691500.0	5977200.0	-6.0846	53.907782	23.7
ORI-A01	690292.5	5977973.1	-6.102477	53.915167	17.9
ORI-A02	690755.0	5979076.8	-6.094756	53.924904	18.3
ORI-A03	691138.1	5980134.3	-6.088268	53.934256	18.6
ORI-A04	691759.0	5981208.3	-6.078149	53.943666	18.2
ORI-A05	692970.9	5981513.4	-6.059518	53.945955	20.9
ORI-B01	691427.9	5977667.1	-6.085403	53.912002	19.4
ORI-B02	691881.0	5978944.7	-6.077714	53.923302	18.4
ORI-B03	692210.8	5980019.5	-6.072022	53.932828	19.0
ORI-B04	693407.6	5980472.4	-6.053531	53.936448	22.1
ORI-B05	694103.6	5981473.4	-6.042308	53.945172	23.6
ORI-C01	692359.4	5977287.2	-6.07148	53.908247	25.6
ORI-C02	692789.2	5978373.4	-6.064263	53.917838	23.1
ORI-C03	693042.6	5979408.1	-6.059756	53.927031	22.0
ORI-C04	694186.2	5979166.2	-6.042517	53.924432	26.2
ORI-C05	694523.8	5980261.2	-6.036687	53.934134	27.0
ORI-D01	692087.7	5976270.2	-6.076248	53.899219	28.1
ORI-D02	693306.5	5976650.5	-6.057484	53.902179	29.4
ORI-D03	693789.2	5978025.5	-6.049277	53.914341	26.9
ORI-D04	694655.5	5977515.6	-6.03643	53.90944	29.3
ORI-D05	695051.7	5978709.4	-6.029646	53.920007	28.4
ORI-E01	690877.6	5976340.2	-6.094598	53.900294	26.7
ORI-E02	691562.8	5975123.7	-6.084943	53.889121	28.7
ORI-E03	692810.1	5975260.3	-6.065905	53.889885	29.2
ORI-E04	693891.4	5975106.5	-6.049571	53.888102	31.9
ORI-E05	694287.9	5976354.3	-6.042756	53.899154	31.5



### LEGEND

- Application Boundary: Red line
- Offshore Wind Farm Area: Green line
- Export Cable Corridor: Blue line
- Offshore Wind Turbine Location and Name (50m radius of lateral deviation and 236m rotor diameter): Circle with 'ORI-XXX'
- Offshore Substation: Red dot with 'ID'
- Inter Array Cable: Orange line
- Export Cable: Yellow line
- Shipwreck: Grey dot with 'ID'
- Admiralty Chart Water Depth (m):
  - >20: Light blue
  - 10 - 20: Medium blue
  - 0 - 10: Dark blue

Geographic information:

Horizontal coordinate system:	UTM 29N
Heights/Depths:	LAT
Geodetic datum:	WGS84
Projection:	universal transverse mercator

4.0	100	08/03/2024	IKE	RCH	RCH	Final
VER.	STATUS	VER. DATE	ISS.	REV.	APP.	DESCRIPTION

PROJECT: Oriel Wind Farm

SUBJECT: Proposed Offshore Infrastructure

Doc. name: ORI-00-0009-GEN-OV-ASSETS-A1\_3.0-100

Admiralty Chart Ref: 44  
 © Crown Copyright 2016. All rights reserved.  
 Reproduced by permission of the Controller of Her Majesty's Stationery Office and UK Hydrographic Office (www.ukho.gov.uk).  
 UKHO copyright licence number EK001-FN800-006936.  
 Not to be used for navigation.

ORIEL WIND FARM	Scale: 1:50,000	Initial Date: 27/04/2021	Projection: UTM84-29N
	ISSUED BY: IKE	REVIEWER: RCH	APPROVAL: RCH
ORIEL WIND FARM Ltd., Digital Office Centre, Balneary Road, Swords, Co. Dublin - Ireland tel: +353 (0)1 963 0313 www.orielwindfarm.ie	ISSUED BY: RCH	REVIEWER: RCH	APPROVAL: RCH